

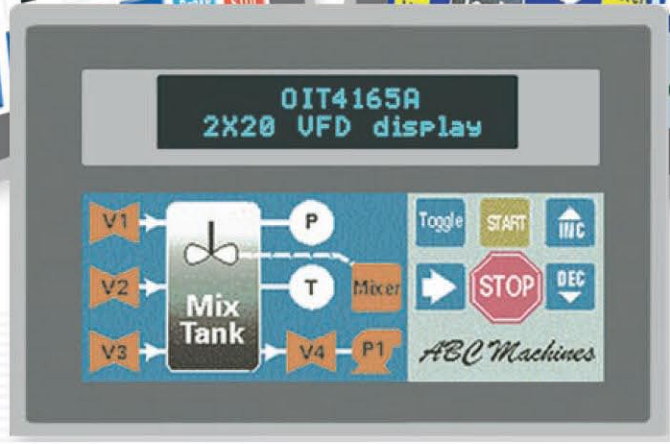


# MicroOIT Series

## 3100/4100 Series

Communicate with PLCs, Motion Controllers,  
and Embedded MicroControllers

**Powerful, Versatile,  
Rugged, Reliable,  
Easy-to-use...**



- PACIFIC SCIENTIFIC
- Superior Electric
- ANIMATICS Motion Control
- Allen-Bradley
- EMERSON Control Techniques
- GE Fanuc

- SIXNET
- MODBUS MODICON
- SAF Drives
- MITSUBISHI
- OMRON
- YASKAWA
- SIEMENS
- QuickSilver Controls

Every Machine  
Needs the  
Human Touch



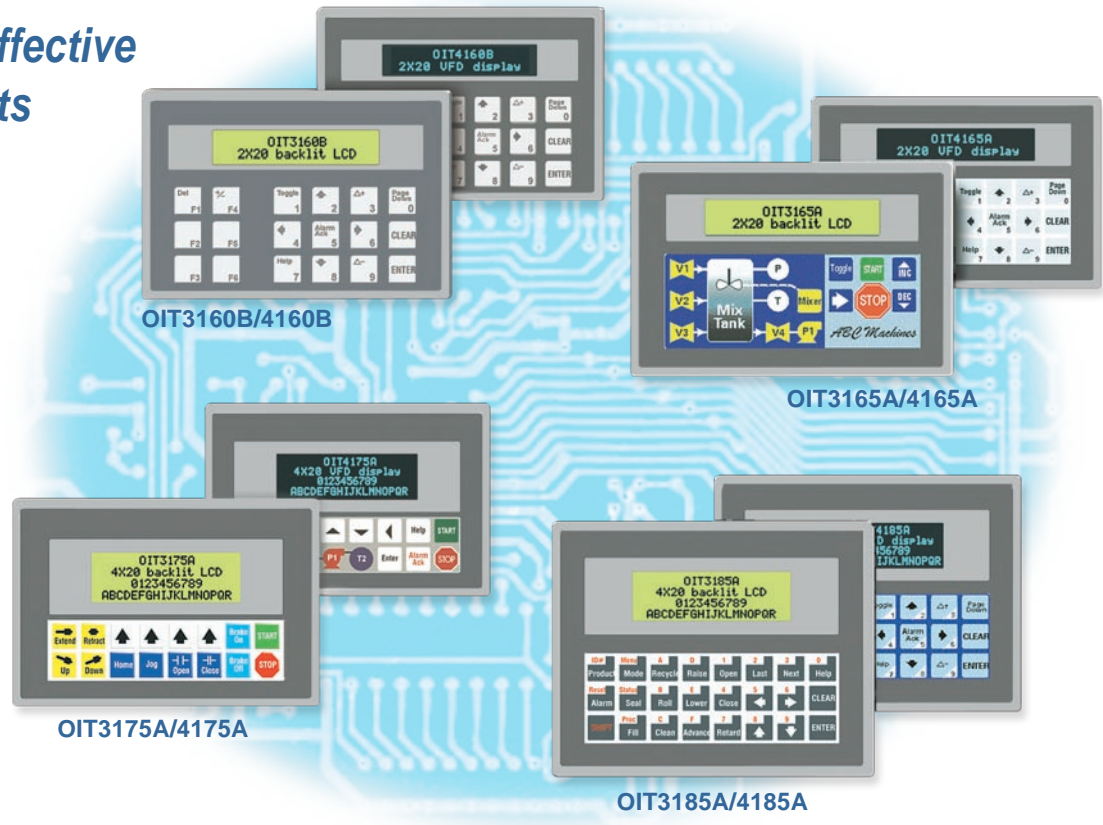
CE UL US LISTED

www.maplesystems.com



Maple Systems MicroOIT Series offer unmatched functionality, flexibility and value. Designed to meet your need for powerful yet affordable operator interface terminals, these MicroOITs offer more features than other products in their class. With the unique user-definable keypad and slide-in legend you can easily create the perfect operator interface terminal for your application. These MicroOITs communicate with over 75 families of PLCs, motion controllers, temperature controllers and embedded microcontrollers. Choose from 2 or 4-line LCD or VFD displays and a 16 or 24-key keypad.

**Truly Cost Effective Replacements for Push Buttons, Switches, Displays, Dials & Lamps**



## Customize Your Displays --

- 2-line by 20-character backlit LCD display
- 24 user-definable screen dependent function keys
- Control keys
- Floating point
- Linear scaling
- Customizable slide-in key legend



# Unequaled Flexibility

Whether you are designing for one application or many, the MicroOIT Series fits the bill. With 500 user-definable screens, 16 or 24 user-definable keys, and a user-definable keypad legend, these MicroOITs fit perfectly in any application.

## Choose Your Own Keys

The MicroOIT Series offers an innovative new feature that allows you to choose the exact keys that your application requires. In the past, you had to search for an operator interface terminal with just the right combination of keys; and when you couldn't find the perfect keypad layout, you had to settle for something different. Now, with the user-definable keypad feature standard on the MicroOIT Series, it is easy to have the exact keypad layout you want; whether that includes function keys, a number pad, no keys at all, or almost any combination you can think of. Choose from the following key types: Global Function Keys, Screen-Dependent Function Keys, Numeric Keys or Control Keys.

## Global Function Keys

You can configure up to 16 global function keys. Each global function key can display one of 500 user-definable screens or simulate a momentary or push-on/push-off mechanical switch.

## Screen-Dependent Function Keys

Screen-dependent function keys allow you to define how they operate in each of the 500 user-definable screens. With 8 available, you have the equivalent of 4000 function keys.

## Numeric Keys

For applications that require data entry, the 0 to 9 and +/- keys are available.

## The MicroOIT Series Offers a Long List of Features

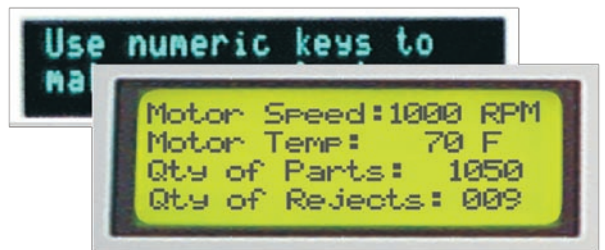
### User-definable Keypads with Custom Slide-in Legends

- Global function keys
- Screen-dependent
- Numeric
- Control keys



### Display Features

- Linear scaling to present analog or digital data in readily understandable terms (i.e., degrees, speed)
- Display chaining
- Blinking characters
- Extended character set
- Horizontal scrolling
- Timed display
- Beep on display
- Your choice of displays
  - VFD or backlit LCD
  - 2-line x 20-character or 4-line by 20-character



### Software Features

- Easy to program
- Multiple language support
- Multiple register monitor formats
- High/low limits
- Screen chaining



## Control Keys

Many different control keys are available, allowing you to tailor the operation of the OIT to the requirements of your application.

## Arrange the Keys

Once you choose the keys you need, these MicroOITs allow you to arrange those keys in any order. Use any, all, or none of the key locations. It's completely up to you. Of course, you are always free to use the predefined templates included in the configuration software.



## Install Your Own Keypad Legend

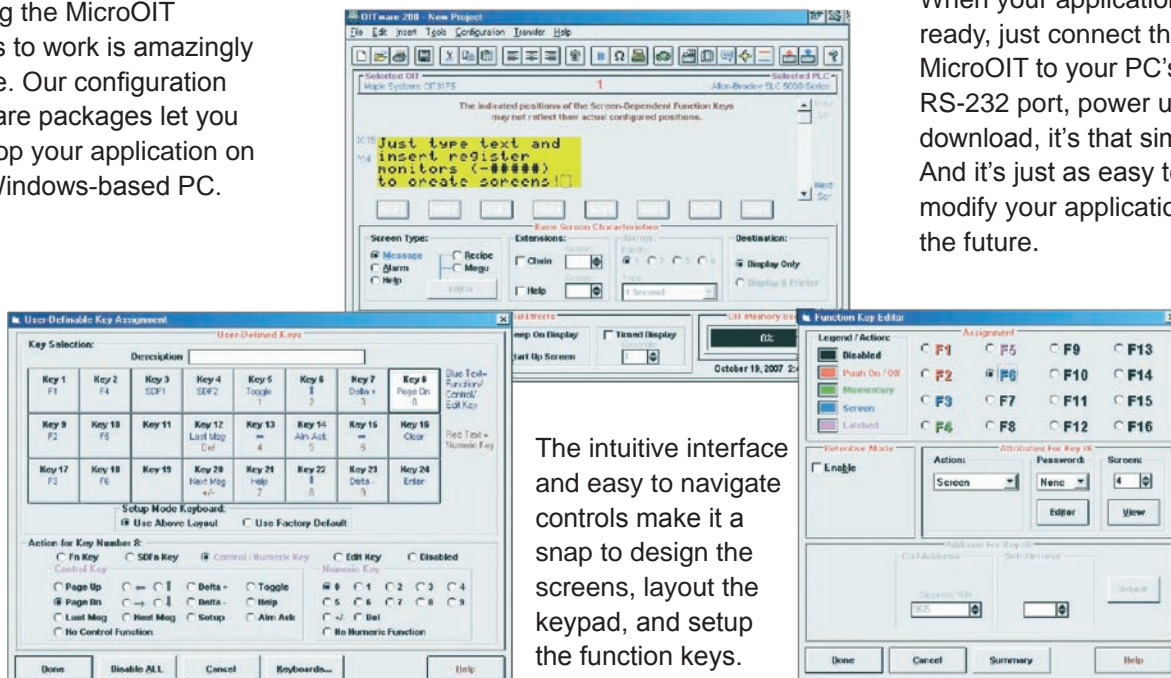


The MicroOIT Series offers the flexibility you demand when it comes to keypad layout & design. All models have a clear area over the entire keypad that allows you to easily and inexpensively label the keys with any combination of text, graphics, and colors by simply inserting a custom legend. The legend can cover any unused keys to guard against operator confusion, and you can use the unused space for your company logo or other information. Just slide-out the default legend and slide-in your own legend for a "Built to Spec" look.

Once installed, the legend is completely sealed and protected.

## Easy to Setup

Putting the MicroOIT Series to work is amazingly simple. Our configuration software packages let you develop your application on any Windows-based PC.



The intuitive interface and easy to navigate controls make it a snap to design the screens, layout the keypad, and setup the function keys.

When your application is ready, just connect the MicroOIT to your PC's RS-232 port, power up and download, it's that simple. And it's just as easy to modify your application in the future.

# Communicate with Clarity

The MicroOIT Series stores up to 500 user-definable screens. Each screen can display as little or as much information as you choose. There is no wasted space -- you have control over the entire screen. The following screen types are available to help you clearly communicate to the OIT operator.

## Message Screens

With the ability to embed up to 25 controller register monitors anywhere in each screen, message screens can convey information to the OIT operator in an easy to read format while allowing the OIT operator to change data in the controller. In addition, message screens can be chained together to form messages longer than the display size.

## Recipe Screens

Recipe screens allow the OIT operator to setup and start a batch process. Each recipe screen can include up to 20 preset and 25 operator controlled ingredients.

## Alarm Screens

Alarm screens keep the OIT operator informed of alarm conditions using a message and an audible alert. The message can include real-time information from up to 25 controller registers.

## Menu Screens

Menu screens allow the OIT operator to quickly and easily branch to other message, recipe or menu screens. Chaining menu screens together, allows each menu option to have a longer description.

## Screen Display Features

The MicroOIT Series offers many screen display features to enhance communication:

- Linear Scaling to present analog or digital data in readily understandable terms (i.e., degrees, speed)
- Blinking Characters and an Extended Character Set
- Horizontal Scrolling
- Timed Display and Beep on Display

## Rugged & Reliable

Tough enough to function almost anywhere, the MicroOIT Series are sealed to NEMA 4/4X(indoor)/12 standards and meet CE specifications for electric noise immunity in commercial, light, and heavy industrial environments. Reliability is not sacrificed to keep these products affordable. We use the best components available to ensure that our MicroOITs operate flawlessly.




## Help Screens

Help screens are linked to related message, recipe or menu screens and display when the HELP key is pressed.



With their full featured functionality, flexibility and easy setup, the MicroOIT Series offers the economical operator interface option you've been looking for. These MicroOITs are simply the best value on the market today. If you have been searching for a truly affordable, yet flexible operator interface for your applications, contact your Maple Systems representative today.



Part Number	OIT3160B/4160B	OIT3165A/4165A	OIT3175A/4175A	OIT3185A/4185A
Display Type (lines x characters)	2 x 20 backlit LCD/VFD	2 x 20 backlit LCD/VFD	4 x 20 backlit LCD/VFD	4 x 20 backlit LCD/VFD
Dimensions (W x H x D)	6" x 4" x 1.77" [152 x 102 x 45 mm]	6" x 4" x 1.77" [152 x 102 x 45 mm]	6" x 4" x 1.77" [152 x 102 x 45 mm]	6" x 5" x 1.77" [152 x 127 x 45 mm]
Key Types Available	Numeric keypad; 6 screen-dependent function keys	Up to 24 user-definable screen-dependent or global function keys, control keys, or numeric keys 	Up to 16 user-definable screen-dependent or global function keys, control keys, or numeric keys 	Up to 24 user-definable screen-dependent or global function keys, control keys, or numeric keys 
Tactile Key Feedback	Yes	No	No	No
Slide-in Legend	No	Yes	Yes	Yes
Operating Temperature	14 to 149°F; -10 to 65°C	14 to 149°F; -10 to 65°C	14 to 149°F; -10 to 65°C	14 to 149°F; -10 to 65°C
<b>CLASS I DIVISION 2</b>	Yes	Yes	Yes	Yes

\* Prices and specifications are subject to change without notice.



= User programmable keypad with custom slide-in legend

# About Maple Systems

## *Elevating the Art of the Operator Interface ...*

Maple Systems is unique in the industrial marketplace. We are operator interface (OIT) experts who have specialized in the design, manufacture and support of operator interface solutions for 25 years. This specialized experience is evident in the quality, versatility and affordability of each of our operator interface terminals.

Our controller support is unsurpassed, with operator interface terminals that communicate with over 80 families of controllers from industry-leading manufacturers like Allen-Bradley, Omron, Siemens, Koyo, and GE Fanuc, as well as the hundreds of PLCs and motion controllers that use Modbus and ASCII communications. And each of our products has all of the features you need at extremely affordable prices.



Whether you need to display simple text or complex data entry and process monitoring, our team of OIT experts can help you to find the perfect solution for your application.

**425.745.3229**  
**425.745.3429 (fax)**  
**www.maplesystems.com**  
 808 134th St SW, Suite 120  
 Everett, WA 98204

**Value ... Performance ... Personalized Solutions ...**  
**From the Operator Interface Specialists**

Presented by